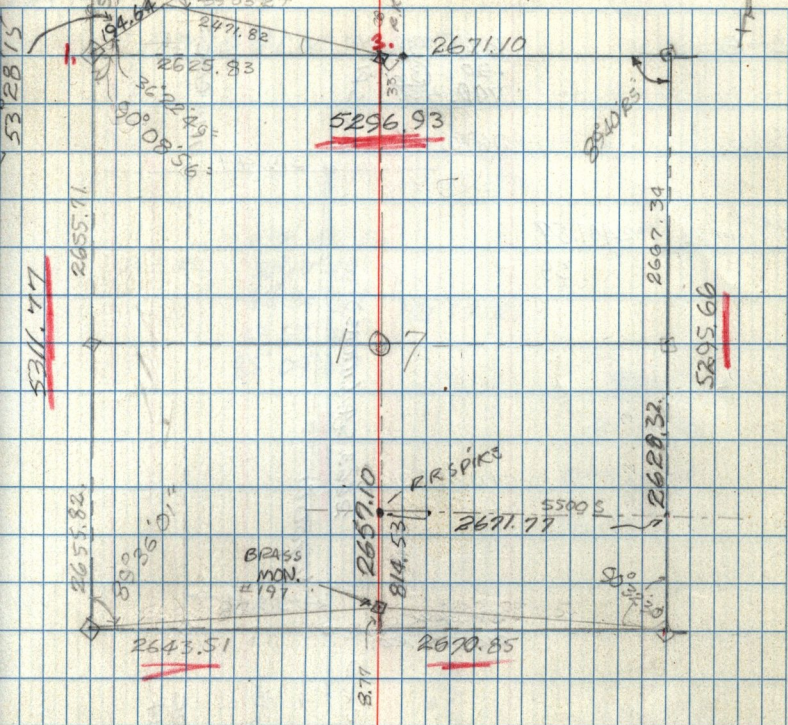


SEC 17 T5N R2W MC 45 - 28 APR 1920 MC-45
 J. CARVER
 V. WARNER
 M. HOLMES

63



531.77

5296.93

5295.66

2643.51

2670.85

843.45
 849.77
 844.13

2490.71, 80, 89, 80
 194.69, 63, 64

NOTE * SEE PAGE
 MC-51 P. 18

39°03'27" O.R.
 39°03'24" O.R.
 78°17'00"
 119°10'15" 13'48"

BRASS MON. #197

RR SPIKE

BRASS MON. #197

17

2655.71

2655.82

2625.83

2671.10

2657.10

814.53

2691.77

2667.34

2668.32

247.82

2672.29

2672.29

2672.29

2672.29

2672.29

2672.29

2672.29

2672.29

2672.29

2672.29

2672.29

2672.29

2672.29

2672.29

2672.29

2672.29

2672.29

2672.29

2672.29

2672.29

2672.29

2672.29

2672.29

2672.29

2672.29

2672.29

2672.29

2672.29

2672.29

2672.29

2672.29

2672.29

2672.29

2672.29

2672.29

2672.29

2672.29

2672.29

2672.29

2672.29

2672.29

2672.29

2672.29

2672.29

2672.29

2672.29

2672.29

2672.29

2672.29

2672.29

2672.29

2672.29

2672.29

2672.29

2672.29

2672.29

2672.29

2672.29

2672.29

2672.29

2672.29

2672.29

2672.29

2672.29

2672.29

2672.29

2672.29

2672.29

2672.29

2672.29

2672.29

2672.29

2672.29

2672.29

2672.29

2672.29

2672.29

2672.29

2672.29

2672.29

2672.29

2672.29

2672.29

2672.29

2672.29

2672.29

2672.29

2672.29

2672.29

2672.29

2672.29

2672.29

2672.29

2672.29

2672.29

2672.29

2672.29

2672.29

2672.29

2672.29

2672.29

2672.29

2672.29

2672.29

2672.29

2672.29

2672.29

2672.29

2672.29

2672.29

2672.29

2672.29

2672.29

2672.29

2672.29

2672.29

2672.29

2672.29

2672.29

2672.29

2672.29

2672.29

2672.29

2672.29

2672.29

2672.29

2672.29

2672.29

2672.29

2672.29

2672.29

2672.29

2672.29

2672.29

2672.29

2672.29

2672.29

2672.29

2672.29

2672.29

2672.29